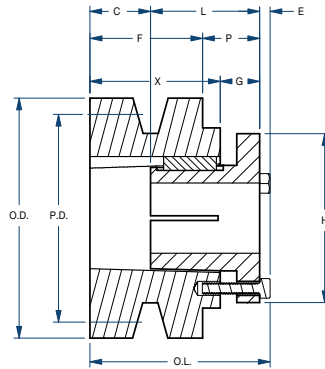
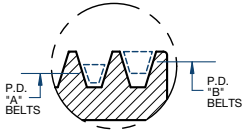


Sheaves

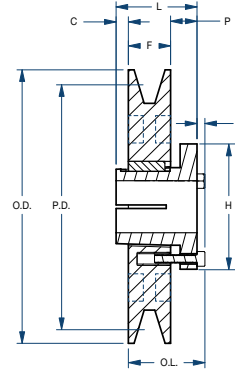
1TB/Split Taper



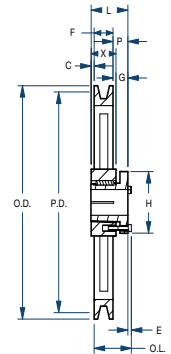
BLACKSTAR®



Type 2



Type 10



Type 16

Part Number		Diameters (in)			Type	Dimensions (in)										Weight less Bushing (lbs)
Sheave	Bushing	Pitch A	Pitch B	Outside		O.L.	L	P	C	H	F	G	X	E		
1TB34	P1	3.0	3.4	3.75	2	2-5/16	1-15/16	1-1/16	1/8	3	1	5/8	1-7/16	1/4	2.0	
1TB36	P1	3.2	3.6	3.95	2	2-5/16	1-15/16	1-1/16	1/8	3	1	5/8	1-7/16	1/4	2.3	
1TB38	P1	3.4	3.8	4.15	2	2-5/16	1-15/16	1-1/16	1/8	3	1	5/8	1-7/16	1/4	2.6	
1TB40	P1	3.6	4.0	4.35	10	2-3/16	1-15/16	5/8	5/16	3	1	—	—	1/4	2.1	
1TB42	P1	3.8	4.2	4.55	10	2-3/16	1-15/16	5/8	5/16	3	1	—	—	1/4	2.4	
1TB44	P1	4.0	4.4	4.75	10	2-3/16	1-15/16	5/8	5/16	3	1	—	—	1/4	2.8	
1TB46	P1	4.2	4.6	4.95	10	2-3/16	1-15/16	5/8	5/16	3	1	—	—	1/4	3.1	
1TB48	P1	4.4	4.8	5.15	10	2-3/16	1-15/16	5/8	5/16	3	1	—	—	1/4	3.5	
1TB50	P1	4.6	5.0	5.35	10	2-3/16	1-15/16	5/8	5/16	3	1	—	—	1/4	3.9	
1TB52	P1	4.8	5.2	5.55	10	2-3/16	1-15/16	5/8	5/16	3	1	—	—	1/4	4.1	
1TB54	P1	5.0	5.4	5.75	10	2-3/16	1-15/16	5/8	5/16	3	1	—	—	1/4	4.6	
1TB56	P1	5.2	5.6	5.95	10	2-3/16	1-15/16	5/8	5/16	3	1	—	—	1/4	5.1	
1TB58	P1	5.4	5.8	6.15	10	2-3/16	1-15/16	5/8	5/16	3	1	—	—	1/4	5.6	
1TB60	P1	5.6	6.0	6.35	10	2-3/16	1-15/16	5/8	5/16	3	1	—	—	1/4	6.0	
1TB62	P1	5.8	6.2	6.55	10	2-3/16	1-15/16	5/8	5/16	3	1	—	—	1/4	5.5	
1TB64	P1	6.0	6.4	6.75	10	2-3/16	1-15/16	5/8	5/16	3	1	—	—	1/4	5.8	
1TB66	P1	6.2	6.6	6.95	10	2-3/16	1-15/16	5/8	5/16	3	1	—	—	1/4	5.9	
1TB68	P1	6.4	6.8	7.15	10	2-3/16	1-15/16	5/8	5/16	3	1	—	—	1/4	6.1	
1TB70	P1	6.6	7.0	7.35	16	2-3/16	1-15/16	25/32	5/32	3	1	5/8	1-5/16	1/4	6.4	
1TB74	P1	7.0	7.4	7.75	16	2-3/16	1-15/16	25/32	5/32	3	1	5/8	1-5/16	1/4	7.3	
1TB80	P1	7.6	8.0	8.35	16	2-3/16	1-15/16	25/32	5/32	3	1	5/8	1-5/16	1/4	7.8	
1TB86	P1	8.2	8.6	8.95	16	2-3/16	1-15/16	25/32	5/32	3	1	5/8	1-5/16	1/4	8.6	
1TB90	P1	8.6	9.0	9.35	16	2-3/16	1-15/16	25/32	5/32	3	1	5/8	1-5/16	1/4	8.9	
1TB94	P1	9.0	9.4	9.75	16	2-3/16	1-15/16	25/32	5/32	3	1	5/8	1-5/16	1/4	9.1	
1TB110	P1	10.6	11.0	11.35	16	2-3/16	1-15/16	25/32	5/32	3	1	5/8	1-5/16	1/4	11.1	
1TB124	Q1	12.0	12.4	12.75	16	2-25/32	2-1/2	1-1/8	3/8	4-1/8	1	3/4	1-3/4	9/32	17.8	
1TB136	Q1	13.2	13.6	13.95	16	2-25/32	2-1/2	1-1/8	3/8	4-1/8	1	3/4	1-3/4	9/32	18.2	
1TB154	Q1	15.0	15.4	15.75	16	2-25/32	2-1/2	1-1/8	3/8	4-1/8	1	3/4	1-3/4	9/32	20.3	
1TB160	Q1	15.6	16.0	16.35	16	2-25/32	2-1/2	1-1/8	3/8	4-1/8	1	3/4	1-3/4	9/32	22.0	
1TB184	Q1	18.0	18.4	18.75	16	2-25/32	2-1/2	1-1/8	3/8	4-1/8	1	3/4	1-3/4	9/32	27.5	
1TB200	Q1	19.5	20.0	20.35	16	2-25/32	2-1/2	1-1/8	3/8	4-1/8	1	3/4	1-3/4	9/32	27.2	
1TB250	Q1	24.5	25.0	25.35	16	2-25/32	2-1/2	1-1/8	3/8	4-1/8	1	3/4	1-3/4	9/32	42.4	
1TB300	Q1	29.5	30.0	30.35	16	2-25/32	2-1/2	1-1/8	3/8	4-1/8	1	3/4	1-3/4	9/32	56.0	
1TB380	Q1	37.5	38.0	38.35	16	2-25/32	2-1/2	1-1/8	3/8	4-1/8	1	3/4	1-3/4	9/32	78.0	